



SIDE LOADER

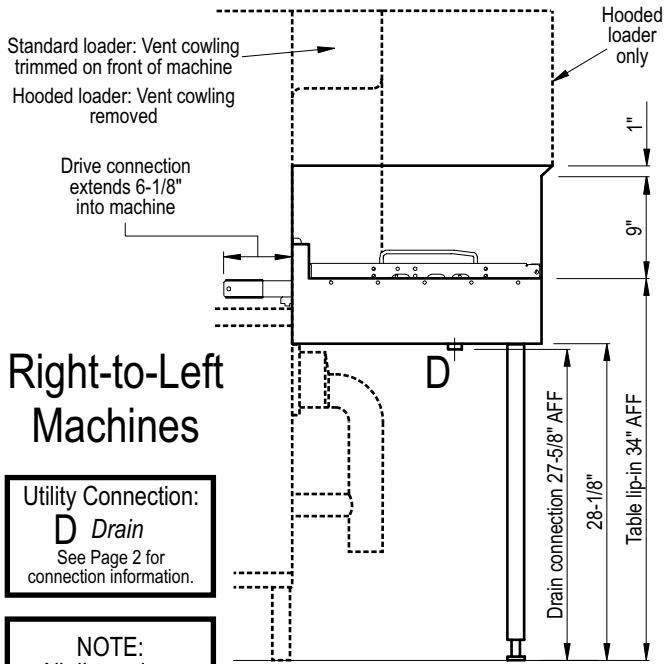
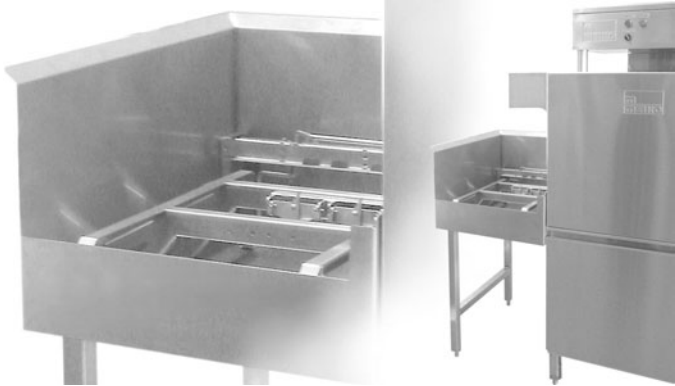
Standard SL-LR, SL-RL
Hooded SLH-LR, SLH-RL

RACK CONVEYOR WAREWASHER ACCESSORIES

Meiko's 23" side loader accessory provides a reliable way to make the most use of limited space in the dishroom.

Racks pushed into the front of the loader are engaged by an extension of the dishmachine's conveyor drive, and are automatically advanced into the dishmachine through 90 degrees. Because the loader is powered by the Meiko rack conveyor dishmachine, racks are automatically advanced at the correct speed and no electrical connection is required.

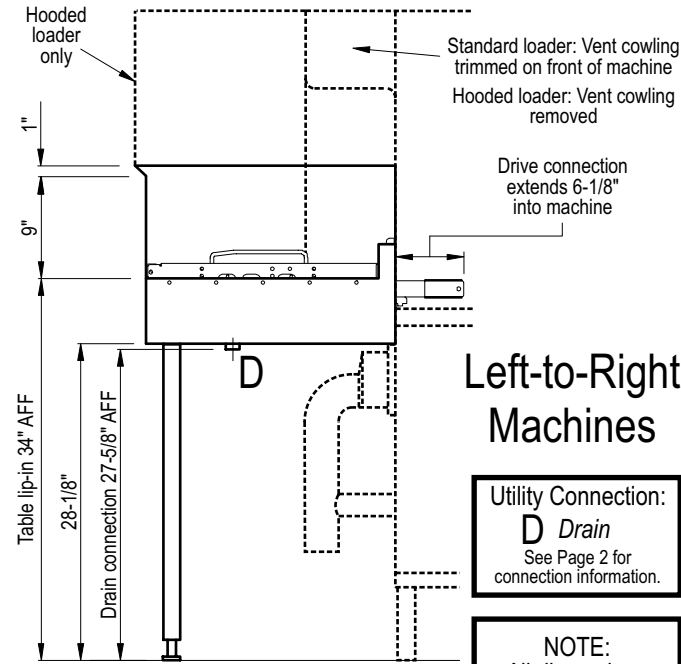
The 23" side loader is available in standard or hooded versions, and may be used with either K-Series or K-Tronic Series rack conveyor dishmachines. Please specify the machine type, direction and options at time of ordering.



Right-to-Left Machines

Utility Connection:
D Drain
See Page 2 for connection information.

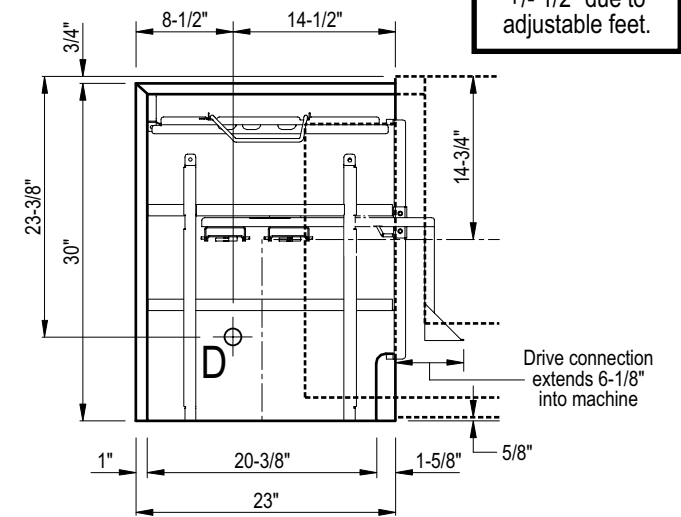
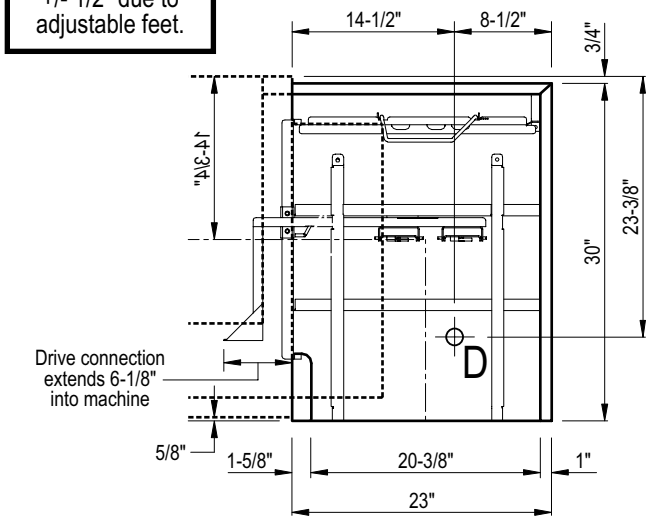
NOTE:
All dimensions from floor are +/- 1/2" due to adjustable feet.

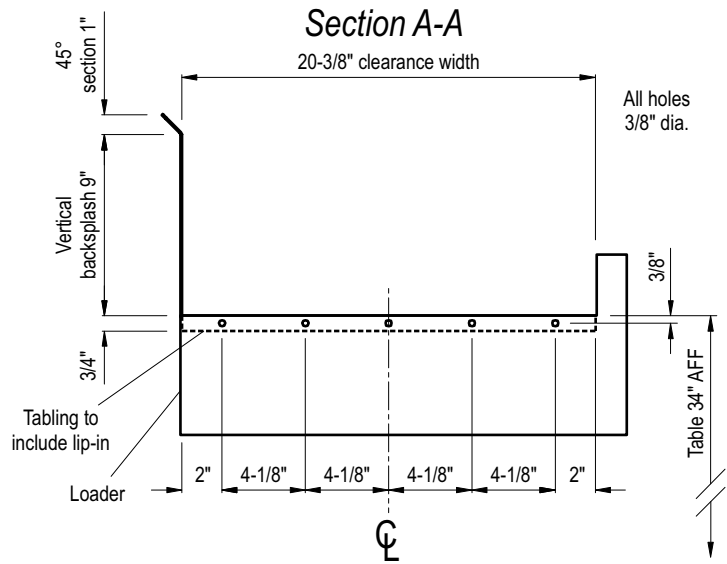
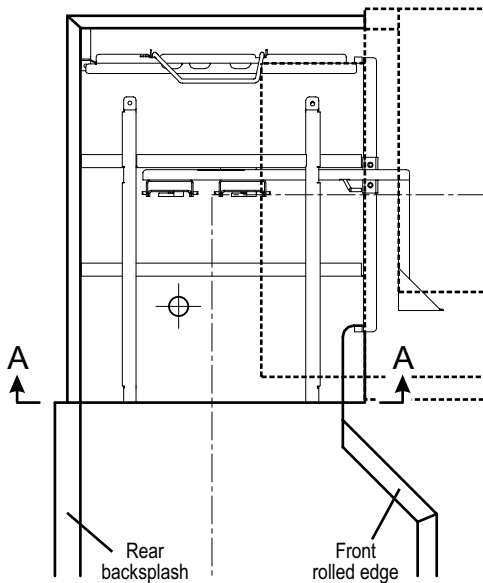


Left-to-Right Machines

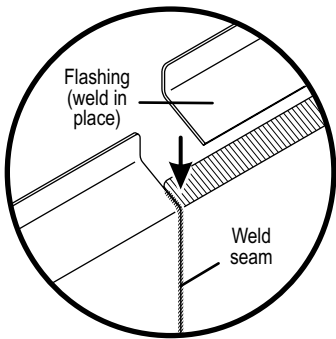
Utility Connection:
D Drain
See Page 2 for connection information.

NOTE:
All dimensions from floor are +/- 1/2" due to adjustable feet.

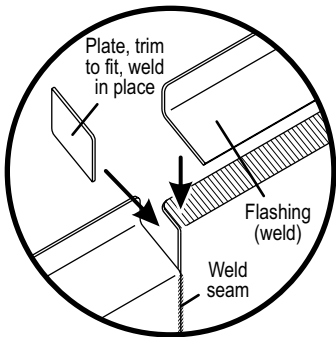




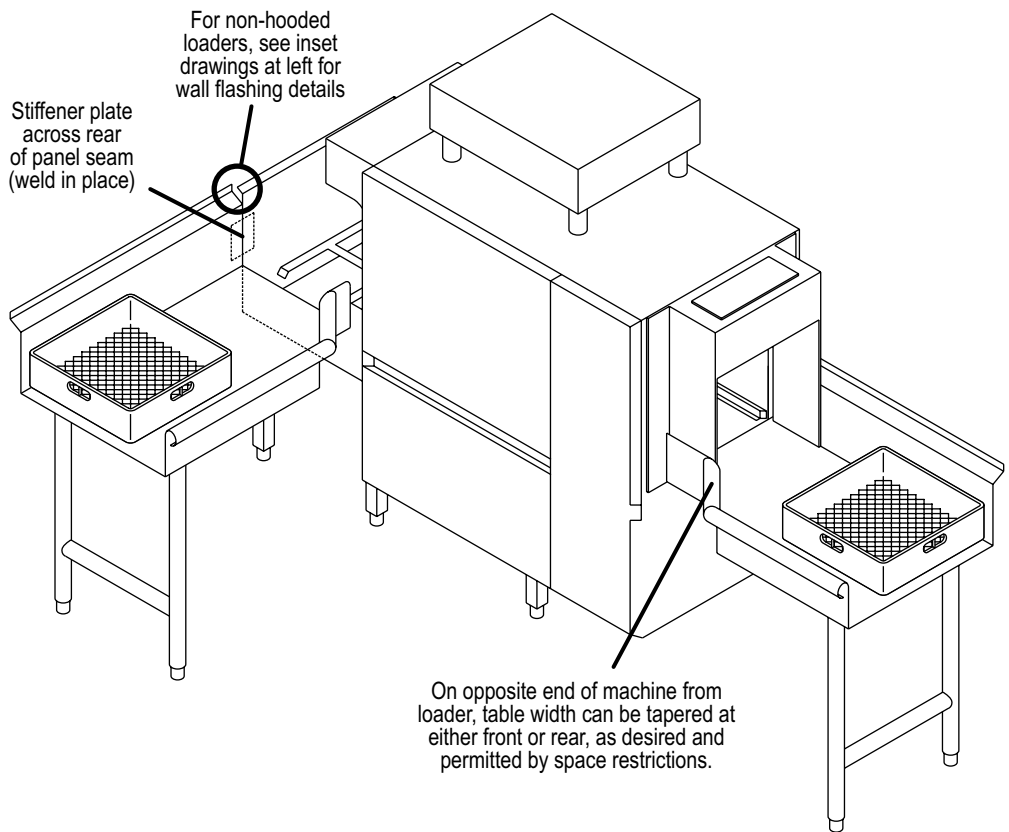
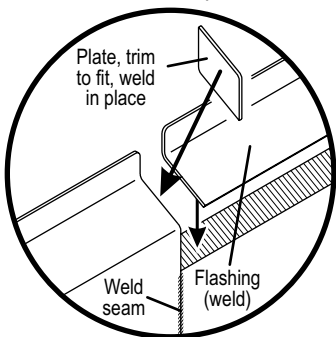
If wall backsplash is same height as loader backsplash



If wall backsplash is lower than loader backsplash



If wall backsplash is higher than loader backsplash



Technical Specifications:

- Overall Dimensions 23"W x 30-1/8"D
 - Standard Loader:
 - Backsplash height 9" vertical + 1" at 45° (10" total)
 - Overall height 44"
 - Hooded Loader:
 - Overall height, standard machine 57-7/8"
 - Overall height, tall-hood machine 65-7/8"
 - Table Lip-In Height 34" AFF
 - Drain 1-1/4" male NPT, 27-5/8" AFF
 - Wall clearances As per table design
- Note: All specifications are subject to change without notice based on Meiko's dedicated product improvement program.*

At time of ordering, please specify:

- Dishmachine Series
 - K-Series
 - K-Tronic Series
- Loader Type
 - Standard (SL)
 - Hooded (SLH)
- Direction of Operation
 - Left-to-Right (-LR)
 - Right-to-Left (-RL)