



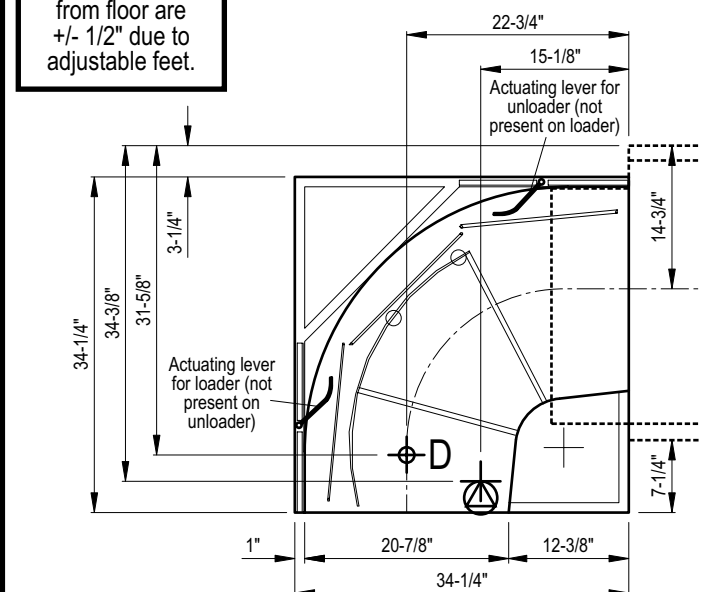
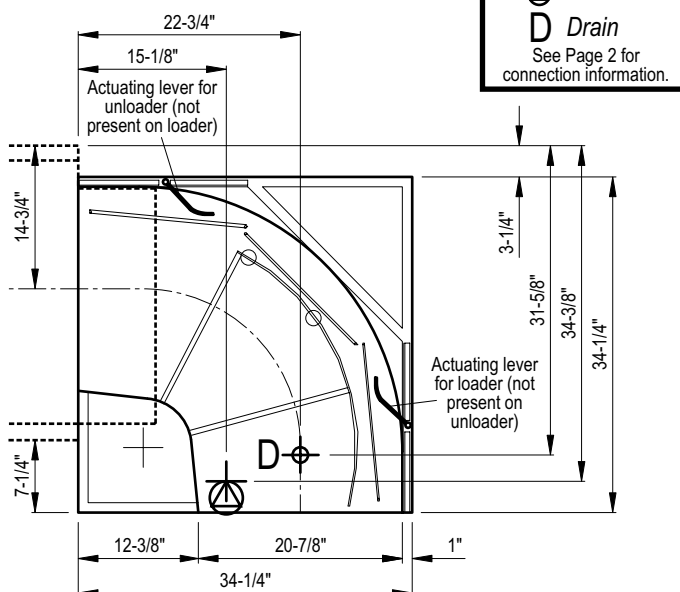
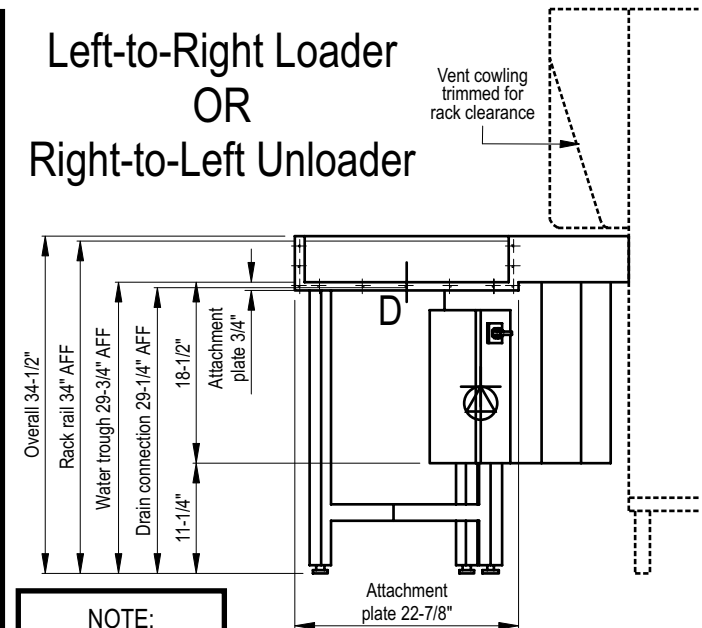
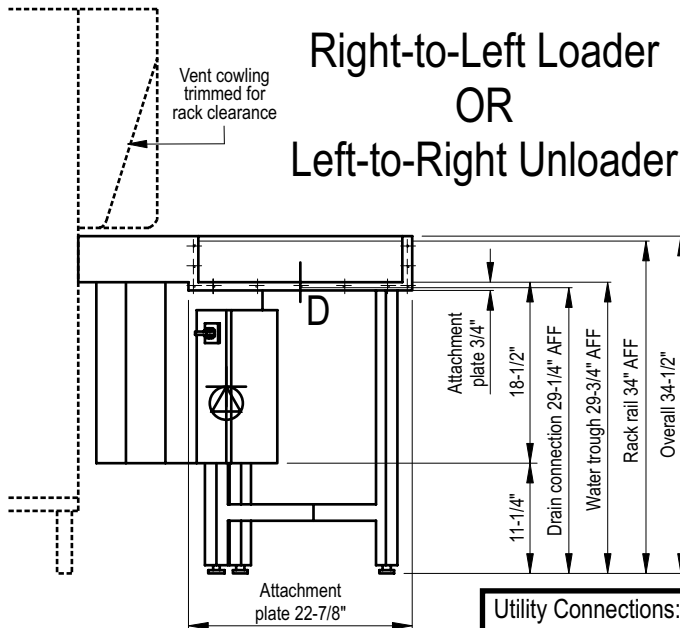
**POWER LOADER,  
POWER UNLOADER**  
PL-LR, PL-RL, PU-LR, PU-RL

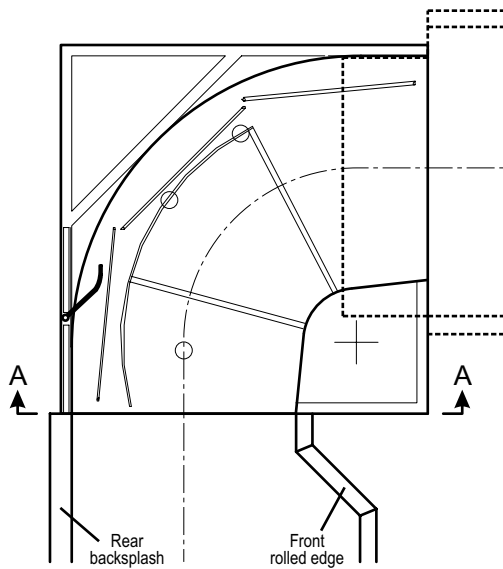
**RACK CONVEYOR  
WAREWASHER  
ACCESSORIES**

Meiko's power loader and unloader accessories provide a reliable way to make the most use of limited space in the dishroom.

Simply turning the loader or unloader on sets it into operation whenever a rack enters. Racks are automatically translated through 90° and loaded into either the dishwasher (for loaders) or onto exit tabling (for unloaders). The drive system is pre-set at the factory for the correct speed settings for the dishwasher. No field adjustment is required.

Model PU power unloaders may be used with either K-Series or K-Tronic Series rack conveyor dishmachines. Model PL power loaders may be used only with K-Series rack conveyors. Please specify the machine type and direction at time of ordering.





**Section A-A**

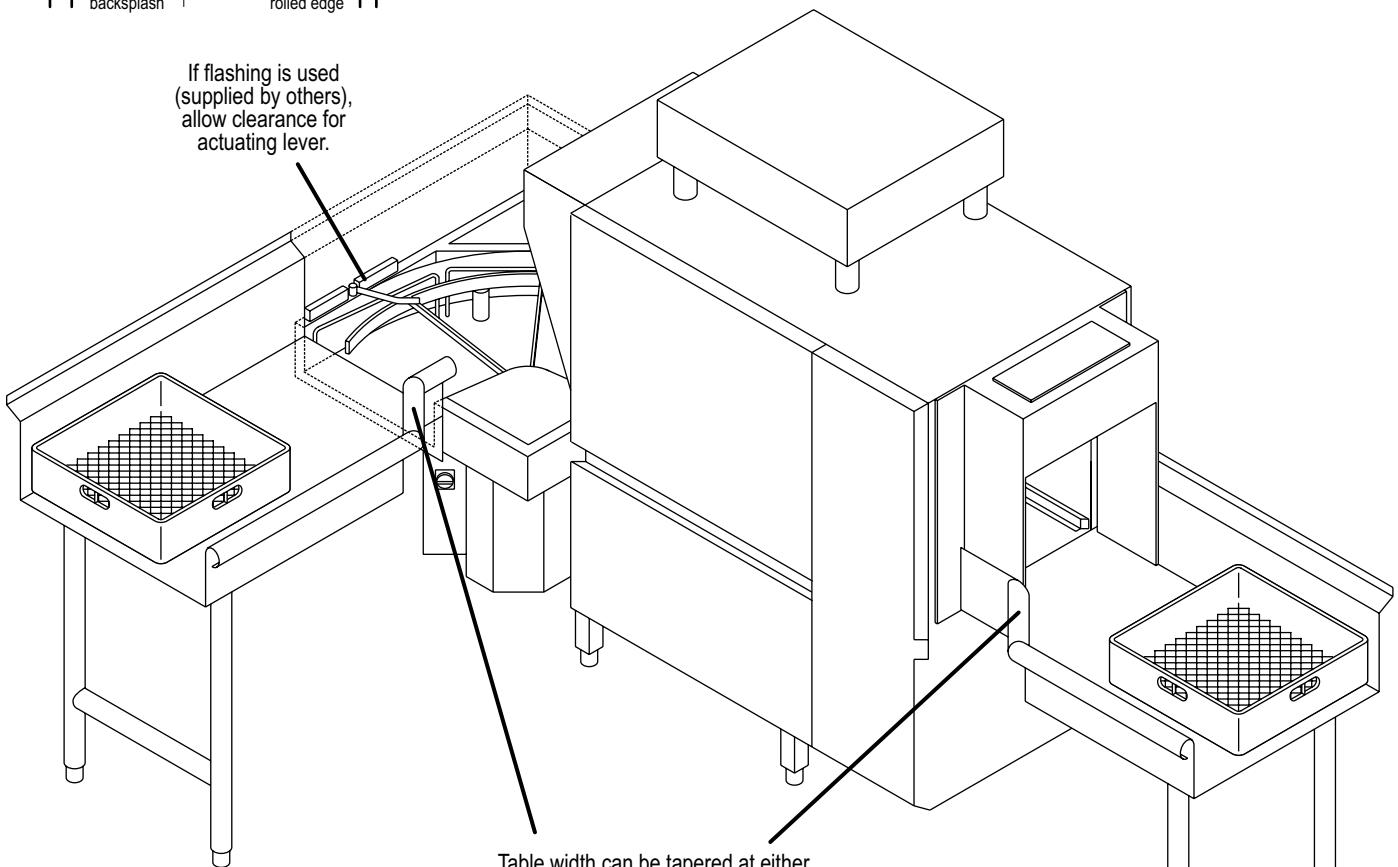
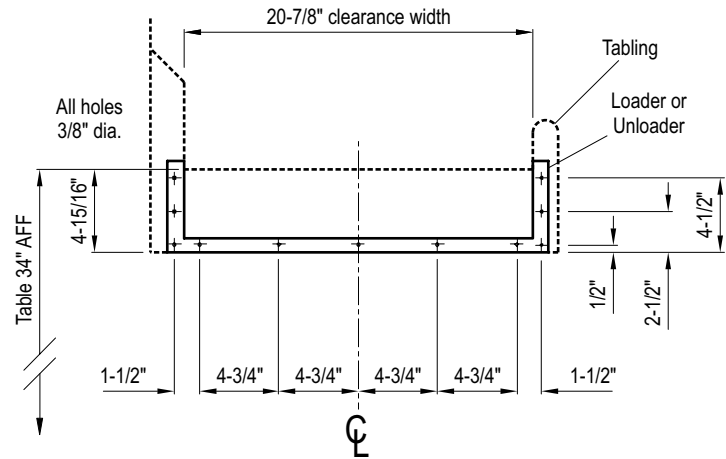


Table width can be tapered at either front or rear, as desired and permitted by space restrictions.

**Technical Specifications:**

- Overall Dimensions ..... 34-1/4"W x 34-1/4"D x 34-1/2" H
- Table Lip-In Height ..... 34" AFF
- Electrical:
  - 208/230 V, 60 Hz, 3Ph, 0.6A or
  - 460 V, 60 Hz, 3Ph, 0.3A
  - Dedicated electrical supply (with circuit breaker/disconnect) should be routed into electrical box from below. Terminal block is at location shown.
- Drain ..... 1-1/4" male NPT, 29-1/4" AFF
- Wall clearances ..... As per table design

**At time of ordering, please specify:**

- Dishmachine Series
  - K-Series
  - K-Tronic Series
- Accessory Type
  - Power Loader (PL) \*
  - Power Unloader (PU)
- Direction of Operation
  - Left-to-Right (-LR)
  - Right-to-Left (-RL)

\* Model PL may not be used with K-Tronic series dishmachines. If a loader is needed with a K-Tronic machine, use 23" loader model SL (standard) or SLH (hooded).

*Note: All specifications are subject to change without notice based on Meiko's dedicated product improvement program.*