



DV 200.2

HOT WATER SANITIZING DOOR-TYPE DISH MACHINE



Meiko's door-type DV 200.2 accommodates two standard 20" racks per cycle. This provides a machine that fills the operating capacity gap between a traditional door-type unit and a small rack conveyor machine.

The DV 200.2's state-of-the-art dishwashing technology offers standard features and benefits currently unavailable in the door-type dishmachine market. Increased rack capacity and low water consumption not only reduce operating costs for the end user, but also provide enhanced performance and cycle flexibility. Meiko's exclusive "Mike 2" programmable controller simplifies operation and service diagnostics. Other unique features include our "Active Plus" wash tank soil removal system, "Soft Start" fine china and glassware protection system, "Aqua-Stop" water leakage protection system, and the "Auto Safe" temperature control system. Together with the unit's **internal booster heater and power rinse pump**, "Auto Safe" provides constant, *guaranteed* temperature and pressure for the wash and final rinse cycles.

As with all products synonymous with the name "Meiko," engineering excellence, manufacturing quality and performance come to the forefront in the DV 200.2.

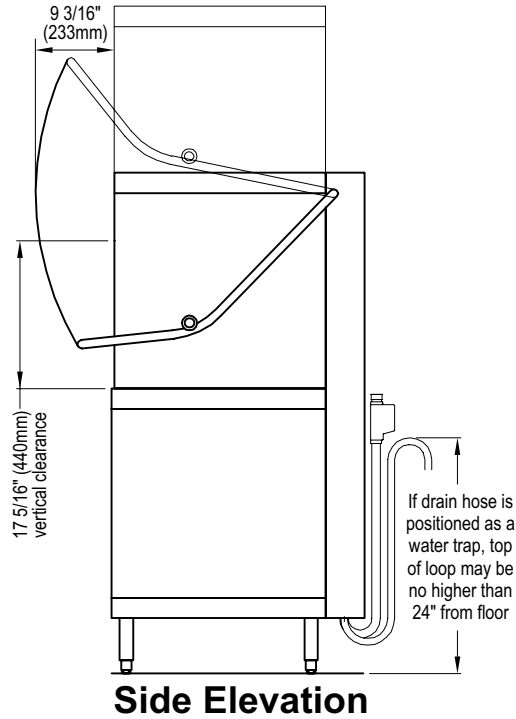
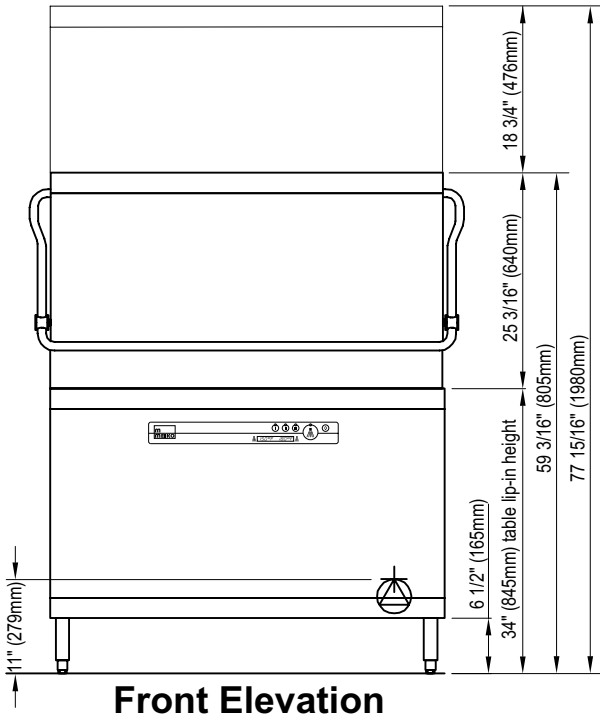
Special Features:

- **Accommodates two 20x20" racks per cycle**
- **Accommodates 18x26" sheet pans** with single-rack loading
- **Mike 2 Programmable Controller** - advanced micro-computer technology for service diagnostics and end-user dishmachine settings
- **Built-in Booster Heater with Power Rinse Pump** - Guarantees constant pressure and temperature during final rinse
- **Double-wall construction** keeps heat inside the machine, reducing energy consumption and heat loss into the dishroom environment
- **Active Plus** - Double filtration of wash water removes food soil, improving washing efficiency and saving detergent while easing cleaning chores
- **Auto Safe** - Guarantees minimum required wash and rinse temperatures regardless of incoming water temperature
- **Soft Start Wash Pump** - Protects dishes and glasses from chipping or breaking
- **Aqua-Stop** - Automatically turns off incoming water supply should internal water leakage occur
- **Field-convertible** from straight-through to corner application in minutes, without additional parts



Standard Features:

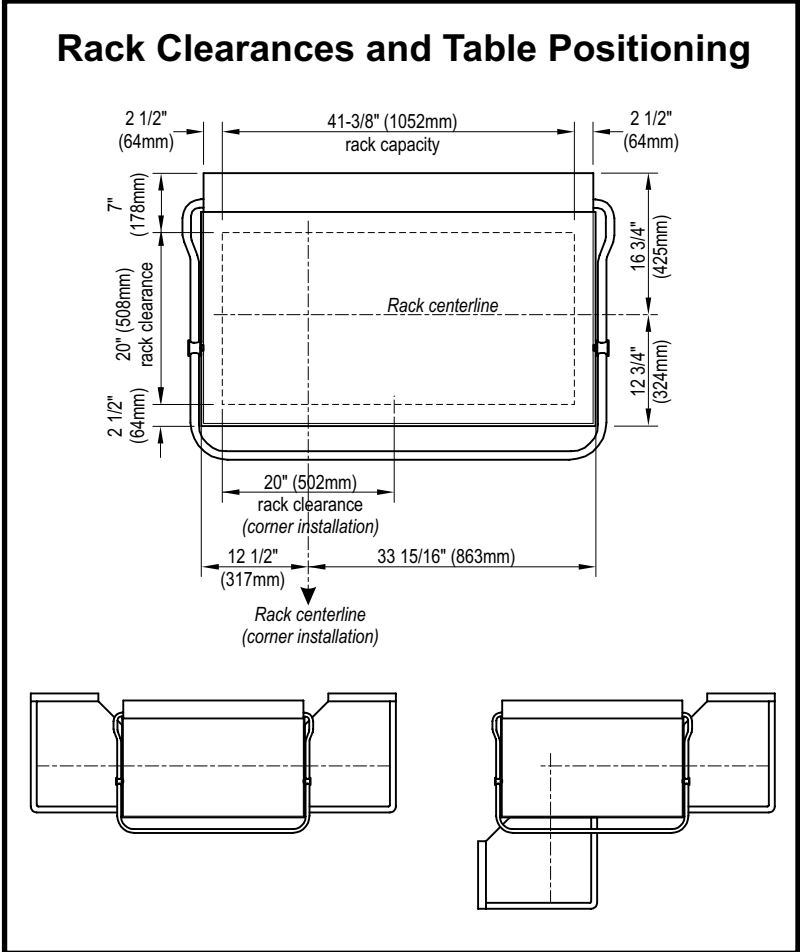
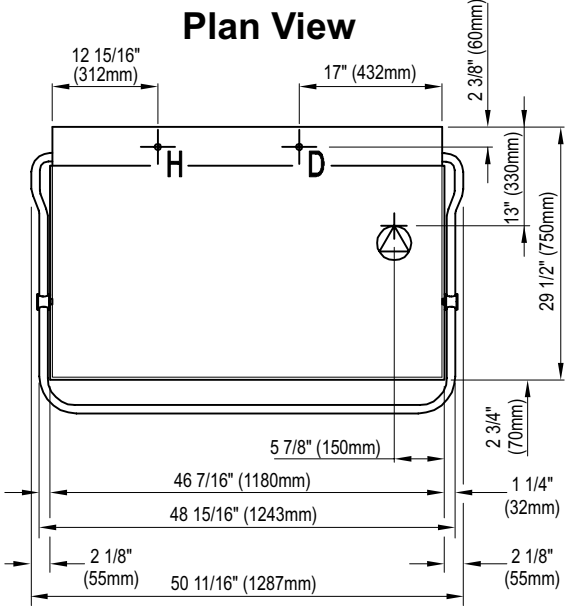
- Variable programmed time cycles - 66, 90, and 210 seconds
- Maximum rack capacity of 108 racks per hour
- Utilizes only 1.07 gallons of rinse water per rack
- Fully automatic - automatic fill, automatic start, and automatic reset
- Pumped drain for both floor and wall drain applications
- Self cleaning cycle - automatic cleaning of the wash chamber following machine shutdown
- Stainless steel non-clogging wash and rinse arms
- Sloped ceiling is safer for the user and prevents dripping of soiled water onto sanitized ware
- Front mounted controls with digital cycle and temperature displays
- Two 1 Hp wash pumps
- All 304 and 316L stainless steel construction for advanced corrosion resistance
- Double wall construction on sides and top
- Dual Type A air gap systems eliminate need for vacuum breaker

Dimensions



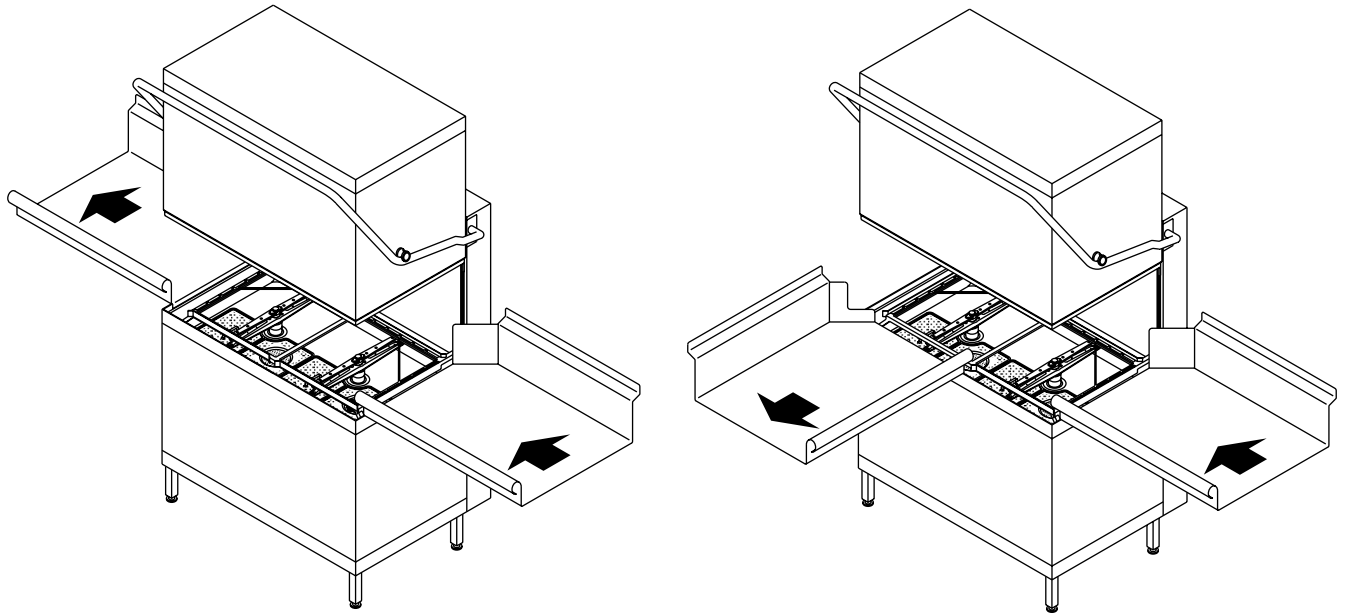
Legend

-  Electrical terminal block
-  Strain relief provided at lower rear of machine. Adequate slack in the wiring should be provided to allow the machine to be moved for servicing.
- H** Fresh water connection
3/4" male garden hose supply connection is required. Supplied hose extends 4' 7" from machine connection.
- D** Drain connection
Requires indirect connection to 1-1/2" drain pipe (wall or floor). Supplied hose extends 4' 7" from machine connection.

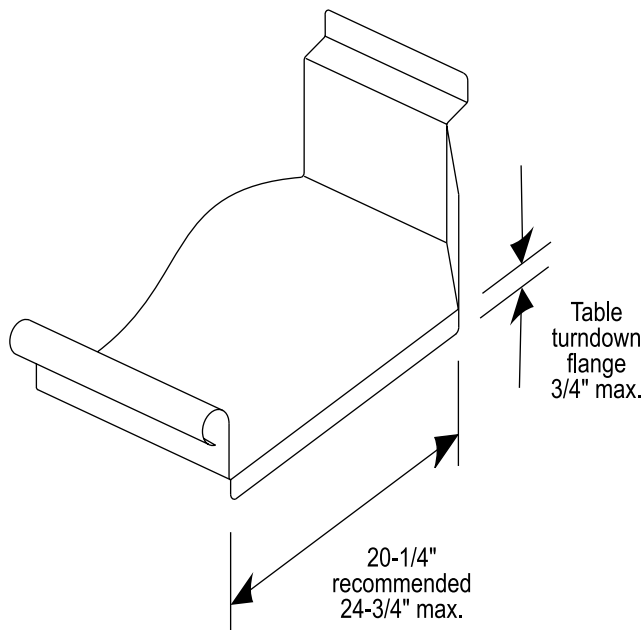


Corner Installations

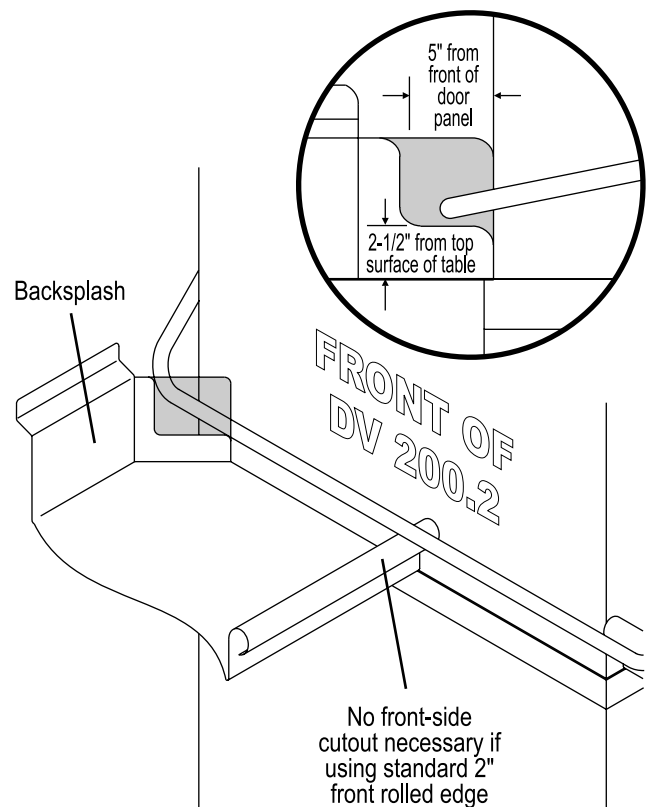
The DV 200.2 is field-convertible from straight-through to corner application in minutes, without additional parts.



Recommended Tabling Construction



Tabling Cutout for Corner Installations



Technical Specifications

Optimum Capacity:

Cycles per hour	54
Racks per hour	108
Dishes per hour	2700
Glasses per hour	3888

Optimum Cycle Time (Seconds):

Wash Cycle	41
Dwell / Drain Time	15
Rinse Cycle	10
Total Cycle	66

Water Requirements:

Gallons per Cycle	2.14
Gallons per Rack	1.07
Gallons per Hour	115.56
Flow Pressure (psi)	14.5-72.5
Drain line Size	3/4" OD Flexible Hose
Incoming Water	3/4" Male Garden Hose

Required Operating Temperatures:

Incoming Water (Optimum)	140°F
Wash (Minimum)	150°F
Rinse (Minimum)	180°F

Tank Capacities:

Wash Tank (full)	12.94 Gallons
Booster Tank	4.75 Gallons
Initial Fill	14.20 Gallons

Electrical Requirements:

Wash Tank Heat	8 kW
Booster Heater	18 kW
Wash Pump	2 x 1 HP
Approximate Total Load Amps:	
• 208-230/60/3	70.1A @ 208V, 76.4A @ 230V
• 460/60/3	36.9A @ 460V

Dimensions:

Overall (HxWxD)	58-7/16" x 46-7/16" x 29-1/2"
Inside Clearance Height	17-5/16"
Wall Clearance	0" min.

Machine/Shipping Details:

Machine Weight	437 lbs.
Shipping Weight	540 lbs.
Shipping Size	65" x 50" x 36"

Specification

DV 200.2 Item Number _____

Dishmachine shall be an NSF and UL-approved Meiko DV 200.2 hot water sanitizing door type dishmachine.

Unit shall be : _____ 208-230 V / 60Hz / 3 Ph
 _____ 460 V / 60 Hz / 3 Ph

Unit will have internal capacity to accommodate two racks per cycle. Unit will have front mounted microcomputer controls, a 66 second total cycle time, and utilize 2.14 gallons of fresh rinse water per cycle. Dishmachine shall utilize a fresh water pumped rinse for constant pressure and temperature every cycle. Unit shall have integral wash tank soil removal system to maintain clean wash water and have built-in temperature safeguards to guarantee washing and rinsing at minimum required temperatures. Wash pumps will be equipped with a smooth start feature to reduce the possibility of chipped and broken dishware. Unit shall also incorporate features to stop operation and shut off water flow to the machine should leakage occur. Machine shall have variable time cycles for heavier than normal soil loads.

"Auto Safe" Feature

The DV 200.2 guarantees that the minimum NSF temperature requirements of 150°F during the wash and 180°F during the final rinse are achieved regardless of the incoming water temperature, even if the dishmachine is installed to a cold water line. Exact rack capacity is dependent upon the incoming water temperature and on the electrical supply voltage.

Incoming Temp.	@230 and 460V			@208V		
	140°F	110°F	70°F	140°F	110°F	70°F
Racks per Hour	108					
Dishes per Hour	2700					
Glasses per Hour	3888					

Note: All specifications are subject to change without notice based on Meiko's dedicated product improvement program.

